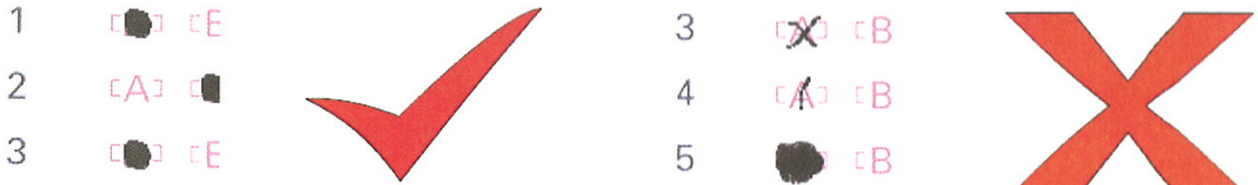


Instructions on using IAA PPL exam answer sheets

(Please read carefully before starting exam)

1. Marked items on the answer sheet must be substantial enough for the answer sheet reader to read them and at the same time inside the boundaries of the square brackets (within reason). *Figure 1* below demonstrates correct and incorrect ways of marking answer sheets.



Spherical marks within square brackets OK.

Examples shown above are too light or heavy

Figure 1: Sample sections of completed answer sheets

2. Copy your printed CANDIDATE NUMBER (Labelled 2 in *Figure 2* below) and SUBJECT CODE (Labelled 4 in *Figure 2* below) to the spaces provided (Labelled 1 & 3 in *Figure 2* below) as demonstrated in *Figure 2* below. Numbers should be marked in accordance with the procedure outlined in point 1 above.

CANDIDATE NAME														INITS.			
J	O	E		B	L	O	G	G	S								
[A]	[A]	[A]	[A]	[A]	[A]	[A]	[A]	[A]	[A]	[A]	[A]	[A]	[A]	[A]	[A]	[A]	[A]
[B]	[B]	[B]	[B]	[B]	[B]	[B]	[B]	[B]	[B]	[B]	[B]	[B]	[B]	[B]	[B]	[B]	[B]
[C]	[C]	[C]	[C]	[C]	[C]	[C]	[C]	[C]	[C]	[C]	[C]	[C]	[C]	[C]	[C]	[C]	[C]
[D]	[D]	[D]	[D]	[D]	[D]	[D]	[D]	[D]	[D]	[D]	[D]	[D]	[D]	[D]	[D]	[D]	[D]
[E]	[E]	[E]	[E]	[E]	[E]	[E]	[E]	[E]	[E]	[E]	[E]	[E]	[E]	[E]	[E]	[E]	[E]
[F]	[F]	[F]	[F]	[F]	[F]	[F]	[F]	[F]	[F]	[F]	[F]	[F]	[F]	[F]	[F]	[F]	[F]
[G]	[G]	[G]	[G]	[G]	[G]	[G]	[G]	[G]	[G]	[G]	[G]	[G]	[G]	[G]	[G]	[G]	[G]
[H]	[H]	[H]	[H]	[H]	[H]	[H]	[H]	[H]	[H]	[H]	[H]	[H]	[H]	[H]	[H]	[H]	[H]
[I]	[I]	[I]	[I]	[I]	[I]	[I]	[I]	[I]	[I]	[I]	[I]	[I]	[I]	[I]	[I]	[I]	[I]
[J]	[J]	[J]	[J]	[J]	[J]	[J]	[J]	[J]	[J]	[J]	[J]	[J]	[J]	[J]	[J]	[J]	[J]
[K]	[K]	[K]	[K]	[K]	[K]	[K]	[K]	[K]	[K]	[K]	[K]	[K]	[K]	[K]	[K]	[K]	[K]
[L]	[L]	[L]	[L]	[L]	[L]	[L]	[L]	[L]	[L]	[L]	[L]	[L]	[L]	[L]	[L]	[L]	[L]
[M]	[M]	[M]	[M]	[M]	[M]	[M]	[M]	[M]	[M]	[M]	[M]	[M]	[M]	[M]	[M]	[M]	[M]
[N]	[N]	[N]	[N]	[N]	[N]	[N]	[N]	[N]	[N]	[N]	[N]	[N]	[N]	[N]	[N]	[N]	[N]
[O]	[O]	[O]	[O]	[O]	[O]	[O]	[O]	[O]	[O]	[O]	[O]	[O]	[O]	[O]	[O]	[O]	[O]

SUBJECT													
A	I	R		L	A	W							

CANDIDATE NUMBER														SUBJECT CODE			
0	0	0	0	0	1							0	0	1			
[1]	[1]	[1]	[1]	[1]	[1]	[1]	[1]	[1]	[1]	[1]	[1]	[1]	[1]	[1]	[1]	[1]	[1]
[2]	[2]	[2]	[2]	[2]	[2]	[2]	[2]	[2]	[2]	[2]	[2]	[2]	[2]	[2]	[2]	[2]	[2]
[3]	[3]	[3]	[3]	[3]	[3]	[3]	[3]	[3]	[3]	[3]	[3]	[3]	[3]	[3]	[3]	[3]	[3]

Irish Aviation Authority																	
[1]	[1]	[1]	[1]	[1]	[1]	[1]	[1]	[1]	[1]	[1]	[1]	[1]	[1]	[1]	[1]	[1]	[1]
[2]	[2]	[2]	[2]	[2]	[2]	[2]	[2]	[2]	[2]	[2]	[2]	[2]	[2]	[2]	[2]	[2]	[2]
[3]	[3]	[3]	[3]	[3]	[3]	[3]	[3]	[3]	[3]	[3]	[3]	[3]	[3]	[3]	[3]	[3]	[3]

Figure 2: Copying CANDIDATE NUMBER and SUBJECT CODE.

3. Question numbers on answer sheet correspond to those on the question paper. For each question on question paper, mark one answer on answer sheet as outlined in point 1 above. Ignore question numbers exceeding those on the question paper. Answer option [E] is not valid and should NOT be chosen as an answer to any question.

PLEASE NOTE:

All exam papers must be completed using pencils.